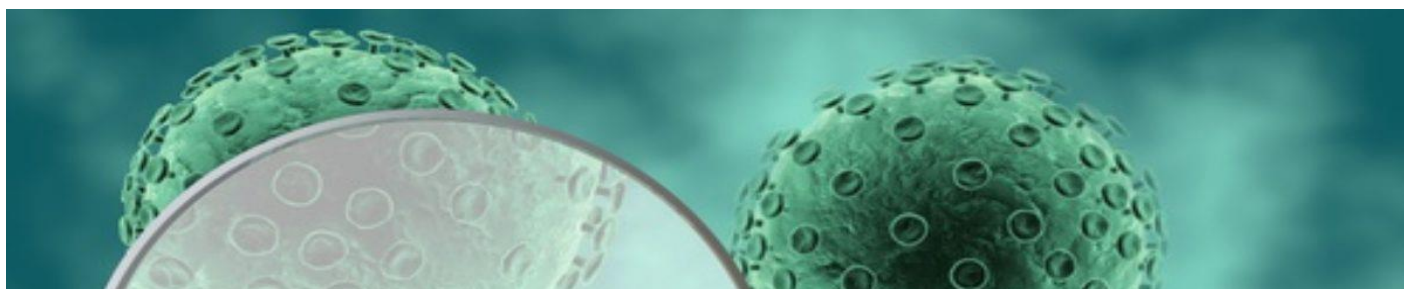


# CAS in Clinical Research



## Introduction to Statistical Software Stata® and Electronic Data Capture Software REDCap

### Description

This course is divided in two parts: Part 1 is a practical introduction to Stata®, a statistical analysis software ([www.stata.com](http://www.stata.com)). The following topics will be covered: data import and export, data manipulation, statistical analysis, graphical representation and an introduction on loops (repetitive tasks). We will also show how to use additional user written commands that are not “official Stata”. Students should bring their own laptop for the practical work.

Part 2 is a short introduction to the electronic data capture software REDCap, a secure web application for building and managing online surveys and databases. The course offers a basic introduction to clinical data management and covers the basic steps involved when building up a small study database.

Participants should have basic statistical knowledge. Programming skills are not required.

As Stata is a commercial software product, we will make a temporary licence available for the course.

### Objectives

By the end of part 1, students will be able to run a typical STATA project: import data from text or Excel files, perform data manipulation (including using labels), save manipulated data, perform simple statistical analysis and graphical representation of the data. By end of part 2, students will be able to setup a simple survey with the basic types of questions for the data entry with REDCap.

### Dates

25 - 27 November 2020

### Equipment

Participants must bring their own laptops.

### Contact:

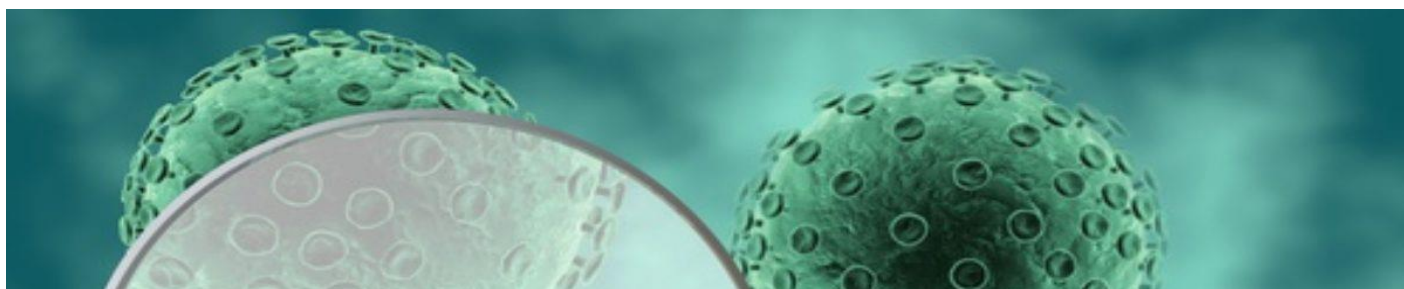
Course coordination: Ann Walser

Address ISPM Bern  
Mittelstrasse 43, CH-3012 Bern

Telephone  
Email  
Website

+41 31 631 58 94  
[casclinresearch@ispm.unibe.ch](mailto:casclinresearch@ispm.unibe.ch)  
[www.cas-clinicalresearch.ch](http://www.cas-clinicalresearch.ch)

# CAS in Clinical Research



## Course Structure

Lessons and practical exercises.

## Assessment

A little project (exam) will have to be completed after the course. The exam will be similar in scope and difficulty to the practical exercises of the course.

## Credits

**1 ECTS**

Preliminary Work: 1 h, Contact: 21 h, Wrap-Up Work: 7 h

(1 ECTS corresponds to appr. 30 hours' work)

## Facilitator

Dr. Adrian Spoerri, MPH PhD, SwissRDL, Institute of Social and Preventive Medicine (ISPM), University Bern

Yves Bochud, MSc, CTU Bern, University Bern

## Location

ISPM Bern, Mittelstrasse 43, 3012 Bern, room tba

## Contact:

Course coordination: Ann Walser

Address ISPM Bern  
Mittelstrasse 43, CH-3012 Bern

Telephone  
Email  
Website

+41 31 631 58 94  
[casclinresearch@ispm.unibe.ch](mailto:casclinresearch@ispm.unibe.ch)  
[www.cas-clinicalresearch.ch](http://www.cas-clinicalresearch.ch)