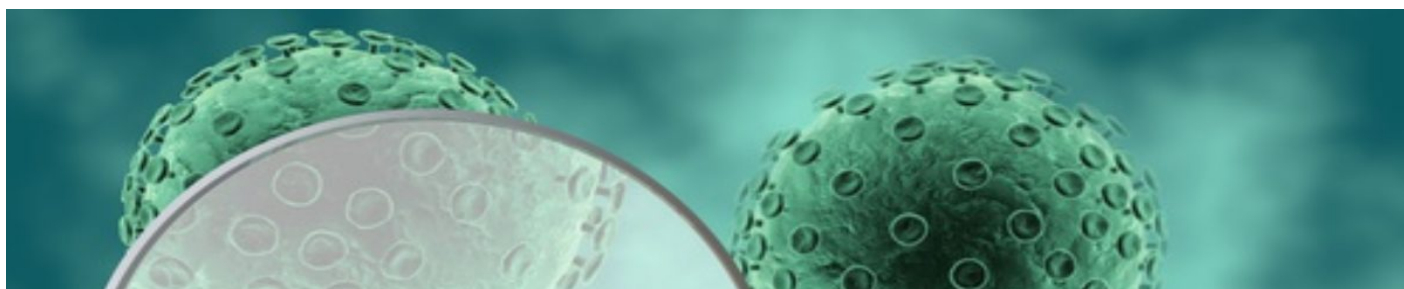


CAS in Clinical Research



Systematic Reviews and Meta-Analysis: a Practical Approach

| | |
|-------------------------|---|
| Facilitators | Prof. Georgia Salanti, Institute of Social and Preventive Medicine (ISPM) Bern Prof. Matthias Egger, Institute of Social and Preventive Medicine (ISPM) Bern |
| Description | Many researchers will have to do one or several systematic reviews, and some will also want to combine results from several studies in meta-analysis. This intensive 3-day course will cover the principles and practical steps of systematic reviews, including the design and conduct of comprehensive literature searches, data extraction and presentation, assessment of bias in the included studies, synthesis of data and examination of publication bias and other biases. The statistical methods for combining results in meta-analysis will also be covered and the course will include practical exercises in R. |
| Objectives | To enable participants to conduct systematic reviews and meta-analyses as part of their work, under the supervision of experienced reviewers. |
| Date | 16 – 18 September 2020 |
| Equipment | Participants should bring their own portable computers. |
| Course Structure | The course will include lectures, pen and paper exercises, group work and computer practicals. PhD students will be involved as lecturers and tutors. Participants will have to read several papers before the course and may continue working on the R practicals after the course. |
| Assessment | A self-assessment will be done before and after the course. |

Contact:

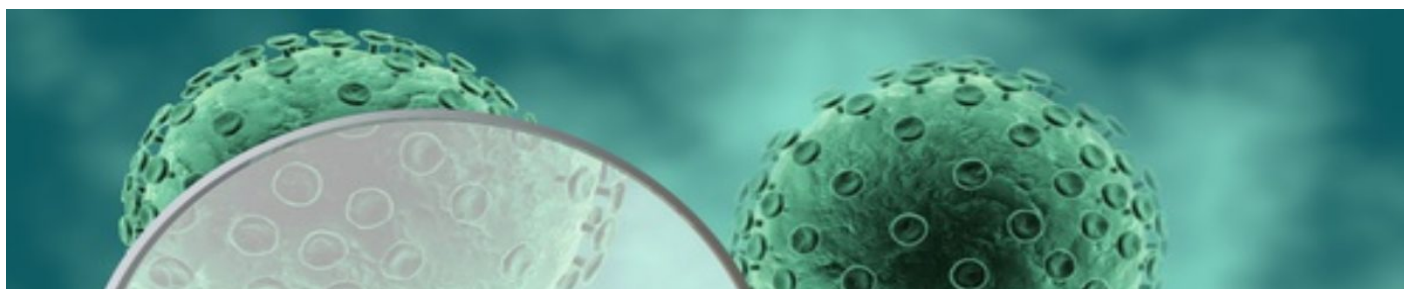
Course coordination: Ann Walser

Address ISPM Bern
Mittelstrasse 43, CH-3012 Bern

Telephone
Email
Website

+41 31 631 58 94
casclinresearch@ispm.unibe.ch
www.cas-clinicalresearch.ch

CAS in Clinical Research



Credits

1 ECTS

Preparation work: 5 h , Contact: 20 h

(1 ECTS corresponds to appr. 25-30 hours' workload)

Location

University of Bern, Mittelstrasse 43, Room: tba

Contact:

Course coordination: Ann Walser

Address ISPM Bern
Mittelstrasse 43, CH-3012 Bern

Telephone
Email
Website

+41 31 631 58 94
casclinresearch@ispm.unibe.ch
www.cas-clinicalresearch.ch