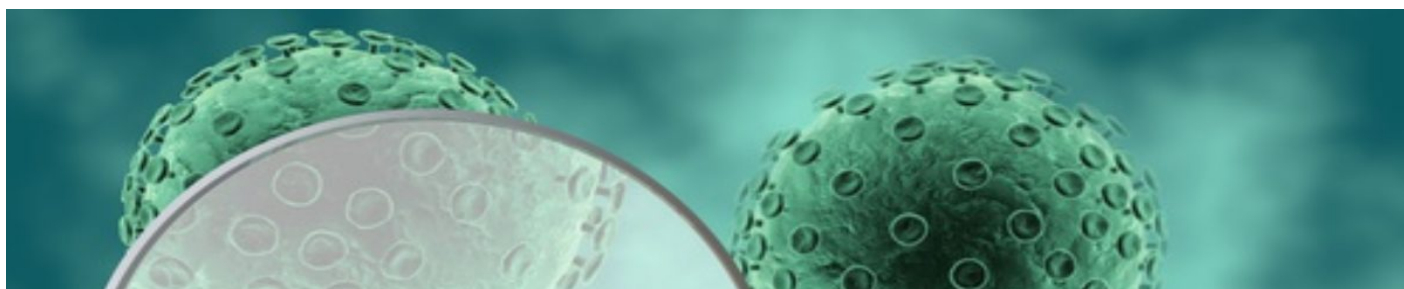


CAS in Clinical Research



Introduction to Statistical Software Stata® and Electronic Data Capture Software REDCap

Description

This course is divided in two parts: Part 1 is a short introduction to the electronic data capture software REDCap, a secure web application for building and managing online surveys and databases. The course offers a basic introduction to clinical data management and covers the basic steps involved when building up a small study database.

Part 2 is a practical introduction to Stata®, a statistical analysis software (www.stata.com). The introduction is meant for Stata beginners and covers the following basic topics: generic organization of projects with Stata, data import and export, data manipulation, basic statistical analysis, graphical representation and an introduction on loops (repetitive tasks) and macros. Students should bring their own laptop for the practical work.

Participants should have basic statistical knowledge. Programming skills are not required.

As Stata is a commercial software product, we will make a temporary licence available for the course.

Objectives

By the end of part 1, students will be able to run a typical STATA project: import data from text or Excel files, perform data manipulation (including using labels), save manipulated data, perform simple statistical analysis and graphical representation of the data. By end of part 2, students will be able to setup a simple survey with the basic types of questions for the data entry with REDCap.

Dates

1 – 3 December 2021

Equipment

Participants must bring their own laptops.

Contact:

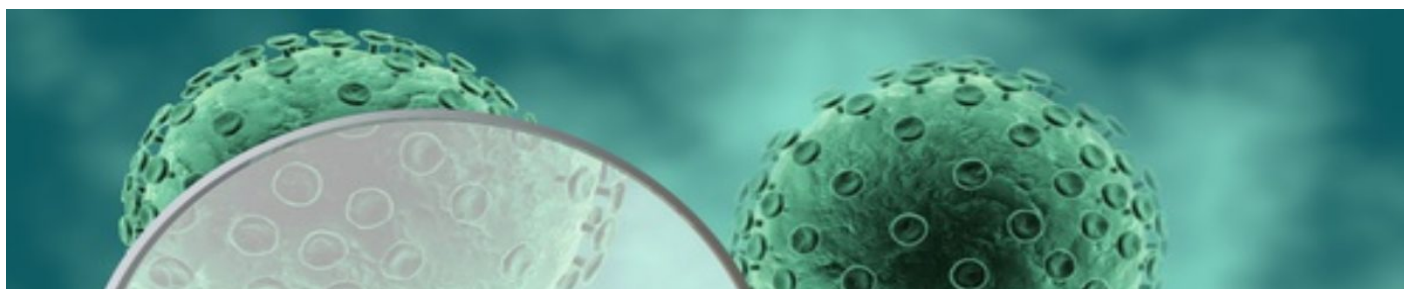
Course coordination: Ann Walser

Address ISPM Bern
Mittelstrasse 43, CH-3012 Bern

Telephone
Email
Website

+41 31 631 58 94
casclinresearch@ispm.unibe.ch
www.cas-clinicalresearch.ch

CAS in Clinical Research



Course Structure

Lessons and practical exercises.

Assessment

A little project (exam) will have to be completed after the course. The exam will be similar in scope and difficulty to the practical exercises of the course.

Credits

1 ECTS

Preliminary Work: 1 h, Contact: 21 h, Wrap-Up Work: 7 h

(1 ECTS corresponds to appr. 30 hours' work)

Facilitator

Dr. Adrian Spoerri, MPH PhD, SwissRDL, Institute of Social and Preventive Medicine (ISPM), University Bern

Yves Bochud, MSc, CTU Bern, University Bern

Location

ISPM Bern, Mittelstrasse 43, 3012 Bern, room tba

Contact:

Course coordination: Ann Walser

Address ISPM Bern
Mittelstrasse 43, CH-3012 Bern

Telephone
Email
Website

+41 31 631 58 94
casclinresearch@ispm.unibe.ch
www.cas-clinicalresearch.ch