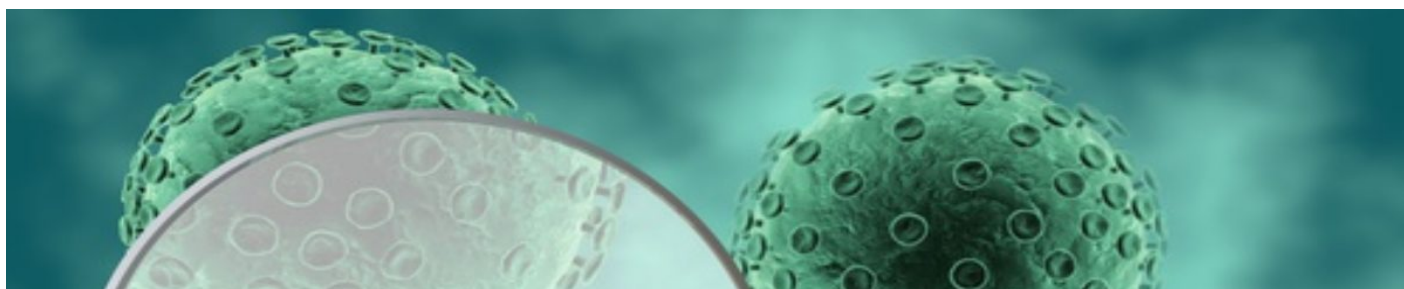


CAS in Clinical Research



Introduction to the Statistical Software R

Description	This is a one-day introduction course in the R programming language. R is a freely available programming language which is widely used for data analysis. Attending the course requires no prior experience in R. Participants will learn how to use R for performing statistical analyses in the context of life sciences. We will start by describing very simple functionalities and we will then use real datasets in order to explore visualization techniques, perform statistical tests and fit simple regression models. In this course we will utilize R-studio, a freely available environment that greatly facilitates the use of R. We will also show how to use R markdown to easily create reports from data analyses.
Objectives	<ul style="list-style-type: none">• To familiarize with the R-studio environment• To learn basic functionalities such as downloading libraries, open and use R scripts• To understand the basics of R programming language• To run commands in order to perform descriptive statistics, statistical tests and simple regression models
Date	19 May 2022
Equipment	Participants should bring their own computers (for which they have administrative right) with the latest R and R-studio already installed
Course Structure	The course consists of short lectures and several practicals
Assessment	None
Credits	None
Facilitators	Prof. Georgia Salanti, Institute of Social and Preventive Medicine (ISPM) Bern Dr. Orestis Efthimiou, PD, Institute of Social and Preventive Medicine (ISPM) Bern
Location	University of Bern, Mittelstrasse 43, Room: tba

Contact:

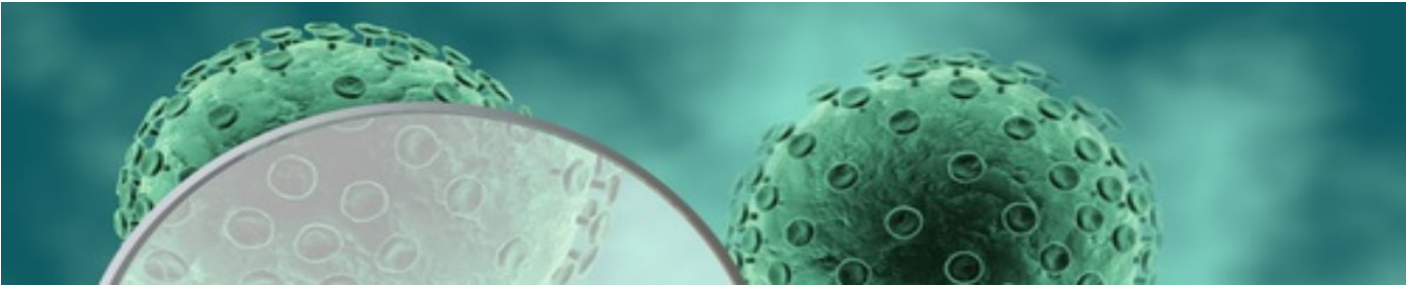
Course coordination: Ann Walser

Address ISPM Bern
Mittelstrasse 43, CH-3012 Bern

Telephone
Email
Website

+41 31 631 58 94
casclinresearch@ispm.unibe.ch
www.cas-clinicalresearch.ch

CAS in Clinical Research



Contact:

Course coordination: Ann Walser

Address ISPM Bern
Mittelstrasse 43, CH-3012 Bern

Telephone
Email
Website

+41 31 631 58 94
casclinresearch@ispm.unibe.ch
www.cas-clinicalresearch.ch