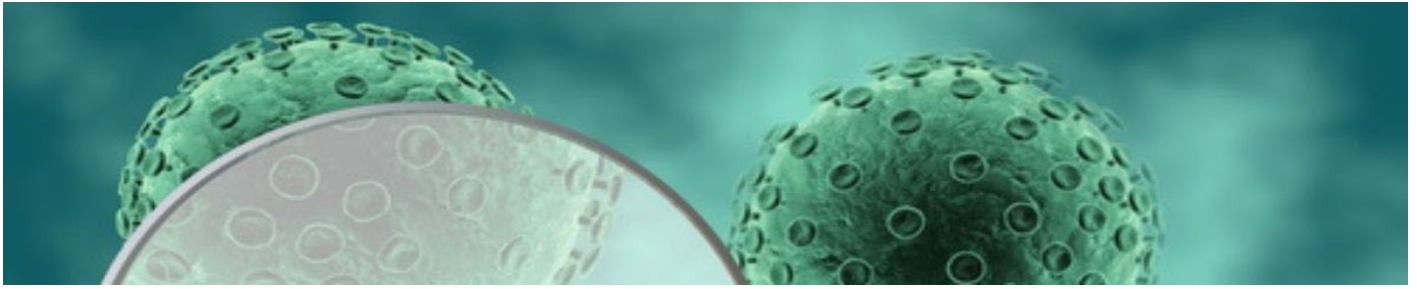


CAS in Clinical Research



Introduction to Electronic Data Capture Software REDCap and to the R programming language.

Description

This course is divided in two parts: Part 1 is a short introduction to the electronic data capture software REDCap, a secure web application for building and managing online surveys and databases. The course offers a basic introduction to clinical data management and covers the basic steps involved when building up a small study database.

Part 2 is a practical introduction to the R programming language. The course is meant for beginners. During the course, participants will learn how to use R for performing statistical analyses in the context of life sciences. We will start by describing very simple functionalities and we will then use real datasets in order to explore visualization techniques, perform statistical tests and fit simple regression models. In this course we will utilize R-studio, a freely available environment that greatly facilitates the use of R. We will also show how to use R markdown to easily create reports from data analyses. Students should bring their own laptop for the practical work. Participants should have basic statistical knowledge. Programming skills are not required.

Objectives

By end of part 1, students will be able to setup a simple survey with the basic types of questions for the data entry with REDCap. By the end of part 2, students will have learned basic functionalities of R such as installing libraries, opening and using R scripts, understanding the basics of R programming language, running commands in order to perform descriptive statistics, statistical tests and simple regression models, and producing graphs. The course will consist of short lectures followed by extensive practical exercises.

Dates

23 – 25 November 2022

Equipment

Participants must bring their own laptops.

Contact:

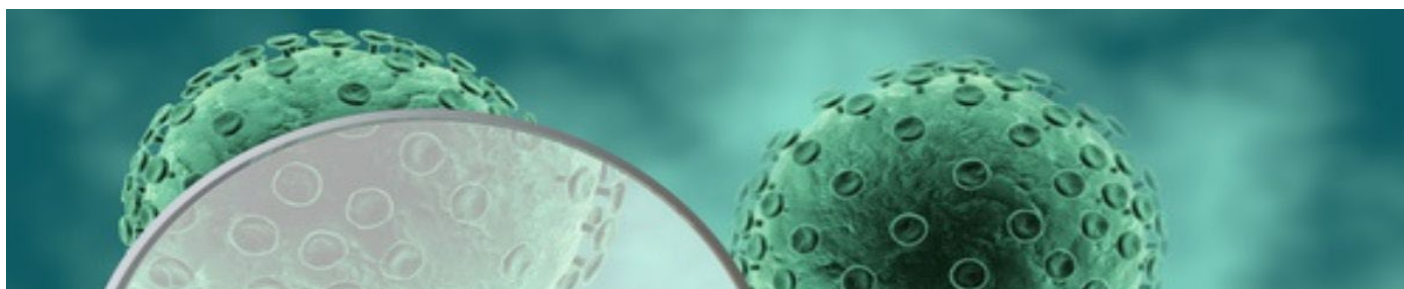
Course coordination: Melissa Nef

Address ISPM Bern
Mittelstrasse 43, CH-3012 Bern

Telephone
Email
Website

+41 31 684 58 94
casclinresearch@ispm.unibe.ch
www.cas-clinicalresearch.ch

CAS in Clinical Research



Course Structure

Lessons and practical exercises.

Assessment

A little project (exam) will have to be completed after the course. The exam will be similar in scope and difficulty to the practical exercises of the course.

Credits

1 ECTS

Preliminary Work: 1 h, Contact: 21 h, Wrap-Up Work: 7 h

(1 ECTS corresponds to appr. 30 hours' work)

Facilitator

Prof. Georgia Salanti, Institute of Social and Preventive Medicine (ISPM) Bern

Dr. Orestis Efthimiou, PD, Institute of Social and Preventive Medicine (ISPM) Bern

Dominik Güntensperger, PhD, Institute of Social and Preventive Medicine (ISPM) Bern

Location

ISPM Bern, Mittelstrasse 43, 3012 Bern, room tba

Contact:

Course coordination: Melissa Nef

Address ISPM Bern
Mittelstrasse 43, CH-3012 Bern

Telephone
Email
Website

+41 31 684 58 94
casclinresearch@ispm.unibe.ch
www.cas-clinicalresearch.ch